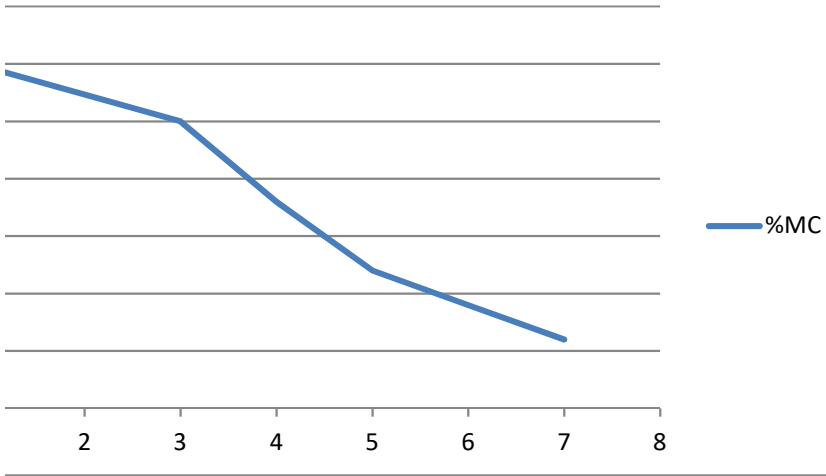


%MC



- 1 Controller
- 2 Heater
- 3 Hot Pot
- 4 Fan
- 5 Chamber
- 6 Scale
- 7 Wood Moisture Meter

https://www.amazon.com/gp/product/B01J1E5LWM/ref=oh_aui_search_detailpage?ie=UTF8&psc=1

600-750 W

Hot plate and pan, crock pot, wall papper steamer, 600-750 W

Box Fan

Any mostly closed container, insulated is preferred. Leave extra space for components, shelves, etc

10 kg, precision down to one gram, front facing display

Make sure it measures high moisture content, 40% minimum

Notes

\$ 42.50 1200 W combined