



## MAWt Milwaukee-Area Woodturners

American Association of Woodturners WI Chapter since January 2006

### MAWt eNews

Volume 6, Issue 12

Check out our website at <http://mawturners.com>

**MERRY CHRISTMAS and HAPPY HOLIDAYS!**

### Shavings from the President's Shop

Last month we held our annual election for board members and I'd like to take this time to thank our outgoing board members, Max, Earl and Don. This last year has shown me the time and dedication it takes to be a board member and we all owe them our gratitude for their time as board members. I would also like to welcome Char and Jim to the board and look forward to working with them this next year.

We had a lot of good demos this last year with Jerry's rose engine demo capping it off. One of my favorite demos was given by Mark Trenier on wood burning, very informative and entertaining. This was Mark's first demo, hopefully we can convince him to do more. I'm sure there are several other members who also have a very good first demo in them, hopefully they will choose to step forward and show us something new. I do have a list of possible demonstrators that we are working on but could always use another suggestion.

I have solidified the weekend that we will host Lyle Jaimeson, this will be March 3<sup>rd</sup> and 4<sup>th</sup> for a two day demo and we will have as many days of hands on demos as we can fill. Each hands on demo will have a maximum of 6 people, these will start Monday. If anyone has any question about the information that he will be going over, you can visit his website at: [www.lylejaimeson.com](http://www.lylejaimeson.com). He has outlines for his classes and a number of good articles that he has written. I'm looking forward to his demo, should be a very good time. We will start

registration in the next month, hope to have a good turnout.

This month we will have our annual Christmas party, thanks go to Barb Nelson for organizing the party. All are welcome to bring something to pass and also are welcome to bring any turnings to show off and discuss. See you there!

Be Safe,  
Jon

### 2011 Club Meeting Dates

**Monday, December 5th:**

- Christmas/Holiday Party

### November Demonstrator



**Jerry Tackes demonstrating the Rose Engine Lathe**

## Spotlight Turner

“Spotlight Turner” will return next month

## MAWt Meeting Information

**M**AWT club meetings are held the first Monday of each month, starting at 6:30 P.M., at Woodcraft / Rhino LLC, 14115 W. Greenfield Ave. New Berlin, WI 53151 Phone: 262-785-6770, Fax: 262-785-6771, or <http://www.woodcraft.com/stores/store.aspx?id=506>

Board meetings start at 5:00 P.M., the day of club meetings, at Culvers on Hwy 100, across from the former Woodcraft location.

## 2<sup>nd</sup> Annual MAWt Christmas Party

Date: Dec. 5th, first Monday of December

Time: 6:30pm

Place: Woodcraft on Greenfield

Last December our Christmas Party was extremely well attended -- the food spread was spectacular, and *the best part was that almost everyone just showed up with food in hand!*

Please, just bring what you brought to last year's Christmas Party, and we will have a veritable feast!

Barb Nelson will bring a vegetable platter, sodas, plates, cups, napkins and ice. Dave Drickhammer will bring the hot beef and buns as he did last year.

The rest is up to you! Show up with food and a festive spirit!

--Barb Nelson, Christmas Party Chairman

## Embroidered Club Logo Available

**T**he club now has a source to embroider shirts with the clubs logo. Members need to bring their own shirt(s) to have embroidered. Shirts will be sent when there is enough to ship. Cost will be \$12 per shirt. If interested, please contact Carl Brust at [cjbrust@wi.rr.com](mailto:cjbrust@wi.rr.com)

## Member Gallery

**Y**ou are invited to bring up to two pieces that you have recently turned. This is a great opportunity to share the “lessons learned” during your turning sessions with other members. Your participation inspires and challenges other to grow in their knowledge and skill.

## Wood Raffle

**Y**ou are encouraged to donate wood and buy raffle tickets as often as you are able. Please bring wood that you would like to turn yourself. Your participation helps support the financial well-being of our club and is greatly appreciated.

## Membership Process and Dues

**C**lub membership is from January through December. New members that join after October 1 will not need to renew their membership until the end of the following year's membership period. Dues are as follows (this can change without notice): MAWt annual dues: \$20.00 and AAW annual dues: \$48.00 minimum (see AAW website ([www.woodturner.org](http://www.woodturner.org)) for member options). All prospective MAWt club members must be a current AAW in order to join. A copy of a current AAW membership card, or copy of the front cover of your AAW magazine that displays membership information, or copy of your on-line AAW membership application payment is required at the time of joining the club.

AAW membership benefits are:

- AAW Journal: American Woodturner
  - Published quarterly
  - High quality full-color publication
- Large circulation
- Variety of articles
  - Current trends
  - Techniques
  - Critiques
  - Galleries
  - Upcoming events
- Local AAW Chapters - Parent organization of more than 300 local chapters in North America and around the world

- AAW Resource Directory
- AAW Symposium – discounted fees for members
- AAW Website ([www.woodturner.org](http://www.woodturner.org))
- AAW Forum ([www.aawforum.org/vbforum](http://www.aawforum.org/vbforum))
- Educational Opportunity Grants
- Liability Insurance for Chapters – U.S. and Canada
- Business insurance available for U.S. members

Questions about MAWt and AAW membership?  
Please contact Carl Brust at: [cjbrust@wi.rr.com](mailto:cjbrust@wi.rr.com)

## Club Library

We offer our members a growing list of topical resources that can be checked out and returned at the following month's meeting. Our library includes DVD's, books, and magazines that address many aspects of woodturning. This is a popular member benefit and the lending rules should be respected and honored. For the benefit and enjoyment of all club members, it is important that you return all MAWt videos and other educational materials at the following month's club meeting. For video selections and to check availability, please see our club librarians, Gary Datka and Sandy Sheahan.



### Recent additions to the MAWt library

- Woodturning - From Tree to Bowl
- Toy Lawnmower
- Elliptical Turning - an Introduction
- Secrets to Creating Two Piece Hollow Forms
- Woodburning, Airbrushing Texturing & Piercing
- AAW Symposium Techniques 2003 Vol. 1 AAW Symposium Techniques 2003 Vol. 2

- AAW Symposium Techniques 2003 Vol. 3
- The Iside Story a Study in Hollow Form Turning
- What a Relief Seasoning for Textured Bowl
- Turn it Up Vol. 1
- Woodturning Projects Volume 1
- Woodturning Projects Volume 2
- Woodturning Projects Volume 3
- Woodturning Projects Volume 4
- Intro to Segmented by Curt Theobald
- Segmented Patterns by Curt Theobald
- Woodturning Today a Dramatic Evolution
- Woodturning Jewelry
- Woodturning #228 - July 2011
- Woodturning #228 - July 2011
- Woodturning Design #32 - Aug. 2011

**Important Reminder:** Everyone that has checked out a library item please return it at the December 5<sup>th</sup>. Our club librarians need to take inventory of all books, magazines, and videos by year-end. Free access to these library materials is a club benefit, so it is extremely important that you return your item(s) by the return deadline. We don't want to have to send Guido after you. He's very effective at helping people see things his way!

## MAWt Membership

Our membership consists of both novice and experienced woodturners. We place a high priority on teaching and expanding each member's turning skills and knowledge of the craft. We encourage each member to freely share ideas, insights, and lessons learned as a result of their experience. Having fun and good fellowship is required at all club functions.

## MAWt Demonstrators Wanted

We are seeking demonstrators that have an interesting theme or approach to turning, and have demonstrated sound technique and skill level. Please forward your suggestions to Jon Behnke at [Jon\\_Behnke@fetchitup@live.com](mailto:Jon_Behnke@fetchitup@live.com)

## Member Services

Name tag or membership card requests or Contact information changes, such as: address, phone, email address, please send an email with your request to Carl Brust at [cjbrust@wi.rr.com](mailto:cjbrust@wi.rr.com)

## For Sale

12" Craftsman wood-turning lathe model no. 113.23851 with owner's manual, tools and accessories (see pictures in the attachments). Also, included is a Craftsman 1/3 hp split-phase type motor (115 volts, 60 cycles, 1725 r.p.m.).

The lathe and motor are in working condition and are table mounted per the instructions and measurements in the owner's manual. The table dimensions are 46" H (incl. the pulley casing) X 24 1/2" D X 66" L. If you know of anyone who could use it and is able to pick it up, they are welcome to it at no charge.

For more information, please call: Les Lucas at 414-527-1743



### Used Powermatic 3520A Woodturning Lathe For Sale

Woodturning lathe with 1-1/4" X 8 spindle, #2 MT (spindle and tail stock quill), Electronic variable speed, 220 VAC single phase  
Includes:  
18" bed extension, safety shield, 3" face plate,

face plate wrench, Powermatic 6" and 14" tool rests, multi ball-bearing live center, Knockout rod 4-point spur drive, Golden Goose 1/2" key chuck 2mt "Fair condition"

Located in Appleton, WI

Total price: \$2,500

Contact: Larry Mercier, telephone: 920-739-3511

e-mail: [lmercier@new.rr.com](mailto:lmercier@new.rr.com)

If you have equipment or tools for sale, please submit a detailed description and prices by the 15<sup>th</sup> of each month and we will include it in the following month's eNewsletter. Please email your information to Scott Kosteretz at [skoz@wi.rr.com](mailto:skoz@wi.rr.com)

## Member Supplier Discount Program

We are continually researching new woodturning resources that may offer our club members special discounts. If you have any suggestions, please contact Jon Behnke at [Jon Behnke <fetchitup@live.com](mailto:Jon.Behnke@live.com)  
Current Supplier Discounts:

- Woodcraft (Requires AAW or MAWt membership card to receive 10% discount)
- Rockler (Requires AAW or MAWt membership card to receive 10% discount)
- Klingspor's Woodworking Shop (Club members receive 10% discount on all non-powered merchandise)
- Craft Supplies (Club members receive 10% discount when mentioning Promotional Code- Clubmem)

## Suppliers and Resources

We are looking to add new woodturning websites to our "Member Resources" newsletter section. If you have discovered interesting and informative websites related to woodturning, please send an email to: Scott Kosteretz ([skoz@wi.rr.com](mailto:skoz@wi.rr.com))

Note: The editor has the right to include or exclude suggested websites based on space, relevancy, and club standards.

### **Manzanita Turning Burls**

[www.nativemanzanitaburl.com](http://www.nativemanzanitaburl.com)

### **CHOICE WOODS**

Contact: Clay Johnson at 2801 Floyd Street, Louisville, KY 40209, 502-587-0777, 888/895-7779, [www.choice-woods.com](http://www.choice-woods.com)

"I only ship what I would want to receive"

### **Steve Russell's Lathe Talk**

Free Monthly e-Zine: Steve Russell's Lathe Talk, a free monthly newsletter (e-zine) for subscribers of Steve Russell's "Woodturning Videos Plus" woodturning website. This newsletter will be delivered on or about the first of each month to the email address you indicated on your sign-up form. All back issues of this newsletter are available to subscribers.

Lathe Talk will offer tips and tricks to make your woodturning easier and more productive. I'll also show you ways to save money in your studio, so you can stretch your hard earned money. In addition, we will periodically offer subscribers only specials on our videos and e-books. To subscribe: Steven Russell

[steverussell@woodturningvideosplus.com](mailto:steverussell@woodturningvideosplus.com)

### **The Woodworking Channel**

If you haven't check this out, you will discover many woodworking video resources (Free to view) on this site including: A Wood working experience, AAW, Fine Woodworking, Intarsia and Marquetry, IWF, The American Woodshop, The Great British Woodshop and more! You can find this at: [www.woodworkingchannel.com](http://www.woodworkingchannel.com)

### **American Association of Woodturners (AAW)**

International, non-profit society dedicated to the advancement of woodturning by providing education, information, and organization.

[www.woodturner.org](http://www.woodturner.org)

### **Woodturners Resource**

This site includes: message boards, woodturning galleries, on-line video's, featured artists, websites, tutorials, projects and tips, event calendar, vendors and resources, and chat.

[www.woodturnersresource.com](http://www.woodturnersresource.com)

### **Woodcentral**

Woodworking information, discussions, chats, articles and sources for everything the woodworker needs. [www.woodcentral.com](http://www.woodcentral.com)

### **Woodturning Online**

Woodturning Online offers turning projects, plans and articles for woodturners including information on bowl, pen and segmented turning using the lathe and more. [www.woodturningonline.com](http://www.woodturningonline.com)

### **Around the Woods**

Wood turning lathe instruction, tips and techniques for the beginner or experienced turner. Wood turning lathe tips, techniques and projects to add to your joy in turning. [www.aroundthewoods.com](http://www.aroundthewoods.com)

### **Woodturns**

The Online Woodturning Community Woodturning articles, woodturning directory, woodturning artists, woodturning projects, woodturning tools, etc. [www.woodturns.com](http://www.woodturns.com)

### **Mystic Burls**

530-917-9642

[mysticburls8@yahoo.com](mailto:mysticburls8@yahoo.com)

<http://www.mysticburlwood.com>

### **Exotic Blanks**

Ed Brown is now carrying Jason Swanson's segmented pen blanks under the brand name "Stripe Tease". For anybody who has admired Jason's segmented pens and would like to turn one of their own, please check out Ed's website [www.exoticblanks.com](http://www.exoticblanks.com).

## **Woodcraft Classes**

If you are interested in developing or expanding your woodworking skills, including woodturning, Woodcraft has classes for all skill levels. Please refer to your monthly Woodcraft flyer or request a class schedule during your next visit to Woodcraft.

## **Regional Classes and Events**

**March 3<sup>rd</sup> and 4<sup>th</sup>, 2012** Lyle Jaimeson, at MAWt . Registration begins in January. Seminar details will be available next month.

## MAWt Board Meeting Minutes

Board meeting minutes of **Milwaukee**, November 5, 2011 at HWY 100 Culver's at 5pm

In attendance: Max Schoenberger, Dave Drickhamer, Earl Elwell, Sandy Sheahan, Jerry Tackes, Don Boeck, Jon Behnke, Carl Brust

- The swing away tailstock will be ordered next week
- Board Elections will be tonight.
- In January we will create a schedule for meetings for the whole year.
- The January meeting will be January 9th due to the New Year's Holiday.
- We reviewed the Spreadsheet of club property and need to make a few changes and additions to be current.
- The Jamison Demo will be March 3&4. Cost will be \$35 per day with reservations made in advance. Walk ins will be if space is available with an additional \$5 charge. Hands on classes will be starting Monday the 5th with a limit of 6 students at \$100.
- The demos will cover beginning to advanced turning.
- Woodcraft will hold a Turn for Troops November 12th 9:30 – 5
- Should we create a members list for vendors for discount purposes?
- December will be our Christmas Party. Contact Barb Nelson if you're willing to bring a dish.

General Meeting minutes of **Milwaukee Area Woodturners** November 5, 2011

- **Schedule of MAWt meetings:**
- December 5 (The December meeting will be our Christmas Party)
- **January meeting will be January 9**
- Nominees for the Board positions are
- Ron Hinderman
- Char Dee
- Jim Andresen

- Bob Balmer
- Congratulations to Char and Jim for their election to the board.
- We have a new magazine in the library. "Woodturning Design".
- **AAW and MAWT dues are due by the February meeting.** Proof of AAW membership MUST be provided.
- The Jamison Demo will be March 3&4. Cost will be \$35 per day with reservations made in advance. Walk ins will be if space is available with an additional \$5 charge. Hands on classes will be starting Monday the 5th with a limit of 6 students at \$100.
- The demos will cover beginning to advanced turning.
- Barb Nelson is in charge of our December party. Please contact her if you are willing to help by bringing in a dish or ?.
- Woodcraft will be conducting a Turn for Troops Nov 12.
- Woodcraft is now carrying Odorless CA for those that have reactions to CA.
- The swing away tailstock will be ordered next week. Cost is \$249 + \$15 shipping.
- The demo this month is Jerry with his Rose Engine Lathe.

## MAWt e-News Submissions

**M**AWt welcomes the submission of news stories, photos, calendar items, letters, announcements, or any other information that would be of interest to woodturners and relevant to woodturning.

Below are guidelines for various submissions:

**please include your name and contact information** (either a telephone number or e-mail address). Please send the information in a timely manner. Remember to include as much pertinent information, including the following:

**WHO** was involved?

**WHAT** was the event?

**WHEN** did the event occur?

**WHERE** did the event occur?

**WHY** was the event important?

Please send your e-News submissions no later than the 15<sup>th</sup> of each month. The editor has the right to edit or not to include the request based on space limitations or topics not relevant to woodturning. Please contact Scott Kosteretz at 414-852-3853 or [skoz@wi.rr.com](mailto:skoz@wi.rr.com)

Jerry Tackes (2011-2013)

**Past Presidents / Board Member Advisory**

Jason Swanson, Past President (2008-2010)

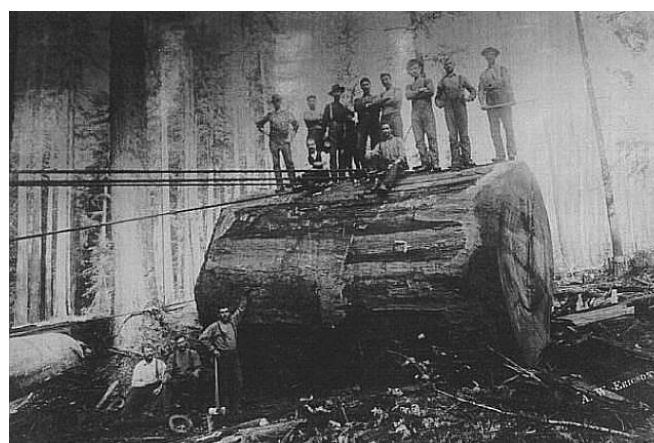
Scott Kosteretz, Past President (2005-2007)

**MAWt Committees**

If you aren't on a committee, you are encouraged to volunteer.

- ❖ **Member/Guest Registration:**  
Tom Palaubecki and Jim Swank
- ❖ **Meeting Set-up/Clean-up:**  
Char Dee, Dennis Dee, Jason Swanson, and Sandy Sheahan
- ❖ **Library:**  
Gary Datka, Sandy Sheahan
- ❖ **Photography:**  
Don Boeck and Ron Nelson
- ❖ **Demonstrator Scheduling:**  
Jon Behnke
- ❖ **Member Gallery Facilitator:**  
Jon Behnke
- ❖ **Wood Raffle Ticket Sales:**  
Char Dee
- ❖ **E-Newsletter Editor:**  
Scott Kosteretz
- ❖ **Membership:**  
Carl Brust
- ❖ **Audio/Video:**  
Dennis Dee

**What would you turn with this timber?**



**MAWt Board members**

- Jon Behnke, President (2011-2013)
- Max Schoenberger, Vice President (2009-2011)
- David Drickhamer, Secretary (2009-2011)
- Don Boeck, Treasurer (2009-2011)
- Earl Elwell (2009-2011)
- Sandy Sheahan (2011-2013)